

Readme File for Novell's Corporate-Wide Upgrade to NetWare 4

----- An Interactive Presentation CompuServe v1.2

Requirements

The presentation is contained in a self-extracting file, NOVLUP.EXE.

All files must be stored in the same directory.

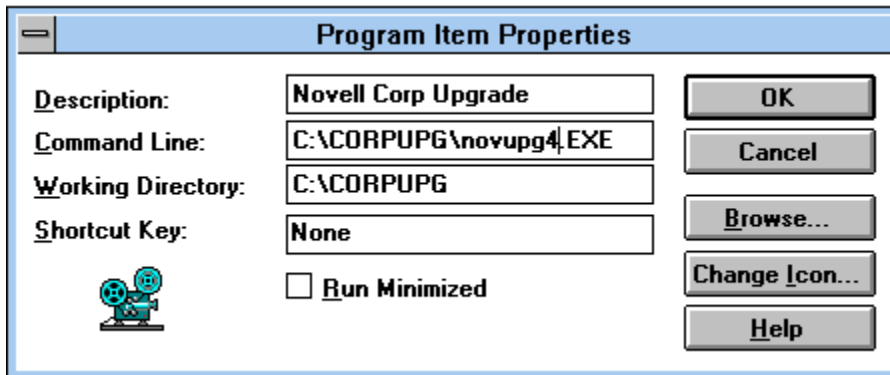
1. Total disk space required is about 5MB.
2. Windows 3.1 (with virtual memory turned off for best performance).
3. At least 8MB RAM on the PC.
4. A fast PC (preferably a 486) that can display 256 colors (Super VGA).

Installation

1. Go to the directory where you want the files stored (e.g. C:\CORPUPG).
2. Type *path:NOVLUP* and the files are decompressed and stored at the current path.

Windows program icon

Create a Windows program icon in the group of your choice.



The program item properties should be similar to the screen above. The executable is NOVUPG4.EXE.

Program execution

Make sure the PC is set for 256 colors (8-bit color depth). If set for 16 colors, the pictures will look quite ugly.

Double-click on the projector icon to start the presentation.

Each of the .MMM files represent a specific topic. If the .MMM file is large, it may take a few moments to load.

The amount of RAM installed, the speed of the PC, and the absence of a swap file directly affects the performance of loading times and playback speed.

Windows 3.1 Issues

You should disable any screen savers prior to running the presentation. If a screen saver

becomes active while the cursor is on screen, when returning to the movie the cursor will be invisible. Starting and stopping the movie again restores the cursor.

Disable disk swapping, especially if you have at least 8MB RAM. The presentation software is smarter than the Windows swapping algorithm about what and when to swap to disk.

Video/Display Driver Support

Some video display drivers fail while the presentation attempts to perform certain graphics operations which should be supported by the display driver. We have added some code at the startup of the player and all projectors which performs diagnostics on the display card and drivers to assure they can perform all needed functions. If any problem is found, the player or projector will refuse to run. This prevents confusion by giving the error up front instead of letting the user find it in some obscure part of a title much later.

We have encountered several crash errors when running with the WinSpeed display drivers. The crash occurs as a General Protection Fault in the display driver. These drivers were marketed by Panacea Inc. of Londonderry, NH. They were developed by Binar Graphics. The WinSpeed drivers are no longer marketed by this company. Version 1.03 was the last version sold.

The WinSpeed drivers can have problems drawing large bitmaps. The crash can be reproduced by importing a large (1024x768) bitmap into Windows Paintbrush. There are no workarounds available and no new version is planned to correct any problems encountered. Panacea recommends that the user obtain the most recent software drivers from the video board manufacturer and use those drivers instead of the Winspeed drivers.

Questions, comments

The presentation was created on the Macintosh using Macromedia Director and converted to Windows.

For more information, please contact Alan Mark at the following addresses:

Email: AMark@Novell, Amark@Novell.com [Internet], or 71121,513 [CompuServe]